



DRIVING SURFACE PERFECTION™

# RAPTOR 2K Bedliner Aerosol



TECHNICAL DATA SHEET

Version: 1.1

## TECHNICAL DATA SHEET & PROCESS GUIDE

The convenient RAPTOR 2K Bedliner Aerosol offers a fast, easy way to apply RAPTOR without compromising performance, no spray equipment necessary. Ideal for spot repairs and small jobs. More than just a bed liner, RAPTOR is a highly durable and tough protective coating. Use RAPTOR on a variety of surfaces that need a protective barrier that withstands the toughest situations. Using RAPTOR is easy - Now you can spray RAPTOR 2K Bedliner Aerosol for a no mess, no clean-up application. It's easy!

## FEATURES

### DURABLE

2K performance gives a tough surface that also protects against rust and corrosion.

### UV RESISTANT

High level of fade resistance.

### WATER RESISTANT

Provides a water resistant finish, keeping moisture out and reducing rust.

### TEXTURED

A range of textures can be created from one can.

### QUICK & EASY TO USE

Ideal for both consumers and professionals.

Easy to activate. No measurements and no gun to clean.

## SUBSTRATES AND PREPARATION



### Substrates

- Original Paint
- Aluminum\*
- Bare Metal\*
- Galvanized\*
- Polyester Fillers
- Rigid Plastic\*
- Fiberglass
- E-coat\*
- Wood\*

\* See Substrate Preparation section for details.



DRIVING SURFACE PERFECTION™

# RAPTOR 2K Bedliner Aerosol



TECHNICAL DATA SHEET

Version: 1.1

## TECHNICAL DATA SHEET & PROCESS GUIDE



### Substrate Preparation

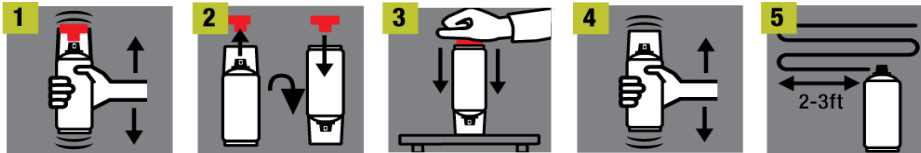
To achieve best results with RAPTOR, good preparation is essential.

1. Remove all loose material and any rust from the surface to be coated.
2. Clean and degrease the surface.
3. Abrade the surface with the required grit sand paper (see below).
4. Re-clean the surface.
5. For hard to reach areas, like internal corners, etc., coat first with UP5024 Raptor Adhesion Promoter, for optimal adhesion.

- \* Metals: Abrade with: Bare metal 80-180; Aluminum/Galvanized 120-180  
Localized rub-thrus: prime with UP5023 Raptor Acid Etch Primer.  
Exposed areas of bare metal: Prime with UP4842 RAPTOR 2K Anti-Corrosive Epoxy Primer Aerosol required for optimum adhesion and corrosion resistance.
- \* Rigid Plastic (ABF, SMC) and fiberglass: Abrade with 120-180. Clean and degrease.
- \* Flexible Plastic (TPO, EDPM, & PP): Abrade with 180-320 grit. Clean and degrease. Coat first with UP5024 Raptor Adhesion Promoter.
- \* OEM E-Coat: Scuff the surface with a coarse abrasive pad then clean and degrease.
- \* Wood: RAPTOR can be applied to clean, dry wood.



### Mixing and Activation



1. Shake can for two minutes before activation.
2. Remove the button from under the instruction leaflet on the cap. Turn the can upside down and fit the button onto the pin in the base of the can.
3. With the cap still on, place the can on a firm surface. Push the button all the way down with the palm of your hand to release the activator into the aerosol.
4. Shake can for two minutes before use.

- TIP:** Q How do I know if I have activated the RAPTOR 2K Anti-Corrosive Epoxy Primer aerosol can?  
A The push button can easily be pushed in with minimal resistance.

Once activated, the pot life is approximately 60 minutes. Discard remaining product after 60 minutes.



DRIVING SURFACE PERFECTION™

# RAPTOR 2K Bedliner Aerosol



TECHNICAL DATA SHEET

Version: 1.1

## TECHNICAL DATA SHEET & PROCESS GUIDE



### Coats

Recommended to first do a test application to determine the desired texture.

Minimum of 2 coats required at 2-3 ft from the surface.

### How to create common textures

#### Flat, rippled texture:

- 1 Apply a heavy coat from a distance of 3 ft, moving slowly across the panel with a steady, even motion, overlapping each pass to create a continuous film.
- 2 Turn can upside down and spray to clear the valve.
- 3 After 20 minutes, apply a second coat just like the first.
- 4 Turn can upside down and spray to clear the valve.



**TIP:** Be careful that the application is not too heavy or heavy build around edges may occur.

#### Coarse ripple texture:

- 1 Apply a heavy coat from a distance of 3 ft, moving slowly across the panel with a steady, even motion, overlapping each pass to create a continuous film.
- 2 Turn can upside down and spray to clear the valve.
- 3 After 20 minutes, apply a lighter second coat at a greater distance away moving faster across the panel.
- 4 Turn can upside down and spray to clear the valve.



#### Smooth fine silky texture:

- 1 Apply a light coat from a distance of 3 ft moving quickly across the panel.
- 2 Turn can upside down and spray to clear the valve.
- 3 After 20 minutes, apply a second coat just like the first.
- 4 Turn can upside down and spray to clear the valve.



#### Matte rough texture:

- 1 Apply a continuous light drop coat from a distance of 3 - 3½ ft until opacity is achieved
- 2 Turn can upside down and spray to clear the valve.
- 3 After 20 minutes, apply a second very light coat from a greater distance to even out the texture.
- 4 Turn can upside down and spray to clear the valve.



**TIP:** If the finish looks patchy a subsequent coat can be applied to blend in the finish.

Build / microns            8 MIL (200µ) depending on texture for 2 coats

Theoretical Coverage approx.    14.5 sq ft (1.3m<sup>2</sup>) depending on texture



DRIVING SURFACE PERFECTION™

# RAPTOR 2K Bedliner Aerosol



TECHNICAL DATA SHEET

Version: 1.1

## TECHNICAL DATA SHEET & PROCESS GUIDE



**Flash-off / min @ 68°F (20°C)**

between coats

20 mins



**Drying Times**

Handling time @ 68°F (20°C)

<60 minutes

Through Dry @ 68°F (20°C)

5-7 days

Topcoat time

After 6 hrs, no prep necessary

After 24 hrs, lightly scuff and degrease the surface first.

## STORAGE & VOC INFORMATION



**Shelf Life**

3 years subject to good storage conditions.

Aerosol cans should be stored for two hours at room temperature before use. For long term storage, keep in a dry well ventilated area and away from direct sunlight and frost. To clear the nozzle and maximize the lifespan of your aerosol, always invert the can and spray upside down for a few seconds after each use. If the nozzle becomes clogged, remove it from the can and soak in gentle thinners.

**Recommended Storage Temperature**

41°F - 77°F

**Recommended Application Temperature**

68°F



**VOC Information**

Order Code	Format	Color	MIR
UP4883	400ml Aerosol	Black	1.2
UP4884	400ml Aerosol	Basalt Gray	1.2
UP4885	400ml Aerosol	White	1.2
UP4886	400ml Aerosol	Flame Red	1.2
UP4887	400ml Aerosol	Olive Green	1.2
UP4888	400ml Aerosol	Sepia Brown	1.2
UP4889	400ml Aerosol	Blue	1.2

**IMPORTANT: Read full instructions before use.**

This product contains hazardous materials and therefore appropriate personal protective equipment should always be used. Please refer to the label and consult the safety data sheet for full handling instructions and personal protection information. U-POL disclaims any liability where the user does not wear the recommended personal protective equipment. The above data is for information only and may change without prior notice. It is the Buyers responsibility to ensure the suitability of the products for their own use and check the information is up to date. The recommendation of use of our products and application in our technical data sheets are based on our knowledge and experience. These data sheets are available via your local distributor or via the U-POL website at WWW.U-POL.COM. U-POL is not responsible for the results obtained by others over whose methods we have no control and thereof U-POL is not liable for consequential or incidental damages including loss of profits.

**U-POL US, Inc.**

180 Commerce Way  
Stockertown, PA 18045  
WWW.U-POL.COM

US Sales

T: 610 746 7081  
F: 610 743 8654

[sales-us@u-pol.com](mailto:sales-us@u-pol.com)

Rest of the World Sales

T: +44 (0)20 8492 5900  
F: +44 (0)20 8492 5999

[sales@u-pol.com](mailto:sales@u-pol.com)

Technical

T: +44 (0)1933 230 310  
F: +44 (0)1933 425 797

[technicaldepartment@u-pol.com](mailto:technicaldepartment@u-pol.com)

**EMERGENCY TELEPHONE: 1-800-424-9300**